



The Most Advanced Lightweight Tracked Vehicle for Exploration

SINCE 1967

NEW!

High Operator Safety

Argo 8x8 XT Models



- Large Adaptable Rear Cargo Platform
- Quick Change of Customized Equipment
- Low Cost of Ownership
- All Season Operation for High Utilization



ARGO 8x8 750 HDi

APPLICATIONS

- Exploration
- Environmental Studies
- Soil Testing & Drilling
- Mine Construction & Operation
- People & Equipment Transport
- Support Vehicle for Mining Fleet
- Core Sample Transportation
- Remote Lifting
- Snow Plowing

FEATURES & CAPABILITIES

- Very Low Ground Pressure
- Environmentally Friendly
- Operates in Flooded Areas
- Crosses Deep Mud and Marshy Terrain
- Fully Amphibious*
- Up to 6 Passengers**
- Travels Over Deep Snow and Ice
- High Altitude Performance
- Overcomes Obstacles and Rocky Terrain
- Hauls Trailers and Supplies

EXTREME TERRAIN VEHICLE SOLUTIONS



Versatile Storage Box Plus 8x8 Trailer Option



Soil Testing



Crane Option



Crew Transport



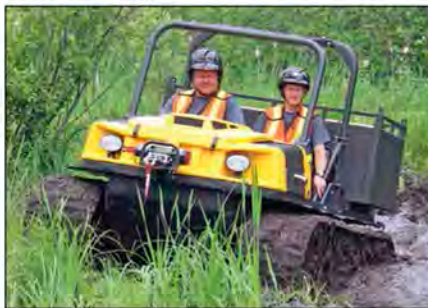
Water Crossing



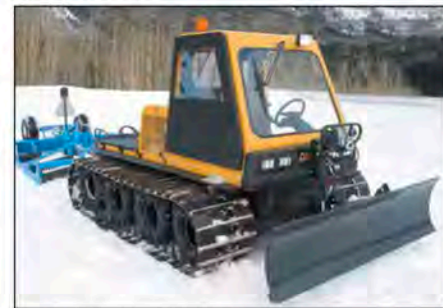
Fire & Rescue



Amphibious Personnel Carrier



Deep Mud Performance



Operation in -40°C (-40°F)

| SPECIFICATIONS | CENTAUR 954 DT | ARGO 8x8 XTD | ARGO 8x8 XTI | ARGO 8x8 750 HDI |
|------------------------|--|---|---|---|
| Engine | 34 HP, turbo diesel | 24 HP, in-line, 3-cylinder, diesel | 30 HP, 4 cycle OHV V-Twin, petrol | 30 HP, 4 cycle OHV V-Twin, petrol |
| Transmission | Automatic | Automatic | Automatic | Automatic |
| Land Speed | 25 mph (40 km/h) | 17 mph (27 km/h) | 17 mph (27 km/h) | 20 mph (32 km/h) |
| Carrying Capacity | 1,500 lbs (680 kg) | 1,340 lbs (608 kg) on land 840 lbs (382 kg) in water | 1,500 lbs (680 kg) on land 1,000 lbs (454 kg) in water | 1,150 lbs (521 kg) on land 1,000 lbs (454 kg) in water |
| Towing Capacity | 2,200 lbs (1000 kg) | 2,000 lbs (905 kg) | 2,000 lbs (905 kg) | 1,800 lbs (816 kg) |
| Drawbar Pull*** | 2,400 lbs (1090 kg) | 1,800 lbs (816 kg) | 1,800 lbs (816 kg) | 1,460 lbs (660 kg) |
| Controls | Automotive-style | Multi-position, one-piece, ergonomic handlebar steering | Multi-position, one-piece, ergonomic handlebar steering | One-piece, ergonomic handlebar steering |
| Winches | Optional front and rear winches | Optional front and rear winches | Optional front and rear winches | Optional front and rear winches |
| Under Body | Full, underbody skid plate | Full, underbody skid plate | Full, underbody skid plate | Full, underbody skid plate |
| Upper Body | Seats 2, full cab enclosed ROPS, versatile rear cargo platform | Seats up to 4 on land or water, ROPS available, versatile rear cargo platform | Seats up to 4 on land or water, ROPS available, versatile rear cargo platform | Seats up to 6 on land / 4 on water, ROPS available |
| Ground Pressure | FULL LOAD CAPACITY | | | |
| with 15" Mud Tracks | 2.2 psi (15 kPa) | 1.91 psi (13.02 kPa) | 1.91 psi (13.02 kPa) | N/A |
| with 18" Mud Tracks | 1.27 psi (8 kPa) | 1.06 psi (7.23 kPa) | 1.06 psi (7.23 kPa) | 0.84 psi (6 kPa) |

Please contact us for more details about customized add-on solutions.



Simon Bolivar Cad.19/3-4
Çankaya / Ankara /Turkey
Tel: +90 312 441 4104
Fax: +90 312 441 4108
www.gigra.com info@gigra.com



*Applies to ARGO 750 HDI and ARGO XT models. The CENTAUR is not fully amphibious, but can cross water with a fording depth of 26" (660 mm). ** Applies to ARGO 750 HDI. *** Drawbar Pull ratings based on ISO 7464-1983. Some vehicle applications shown are for demonstration purposes, originating from third parties and not available from ARGO. In all cases, vehicle load limits have been considered. For safety, always wear approved helmets and eye protection. When operating in water, always wear approved Personal Floatation Devices. Always remain seated while in the ARGO. 678-18 • Printed in Canada 07/2013